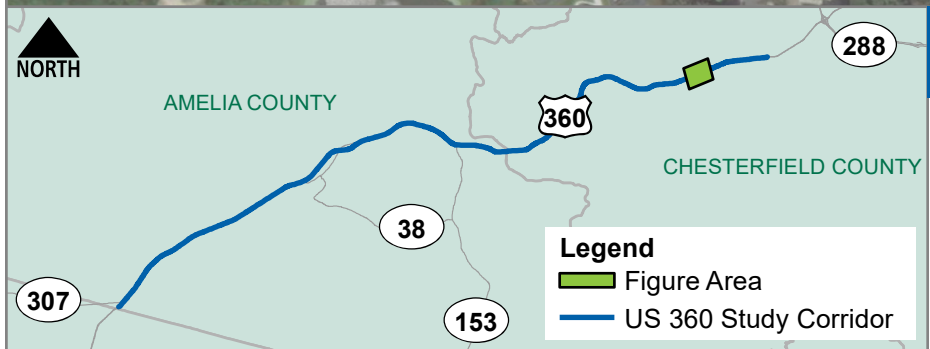
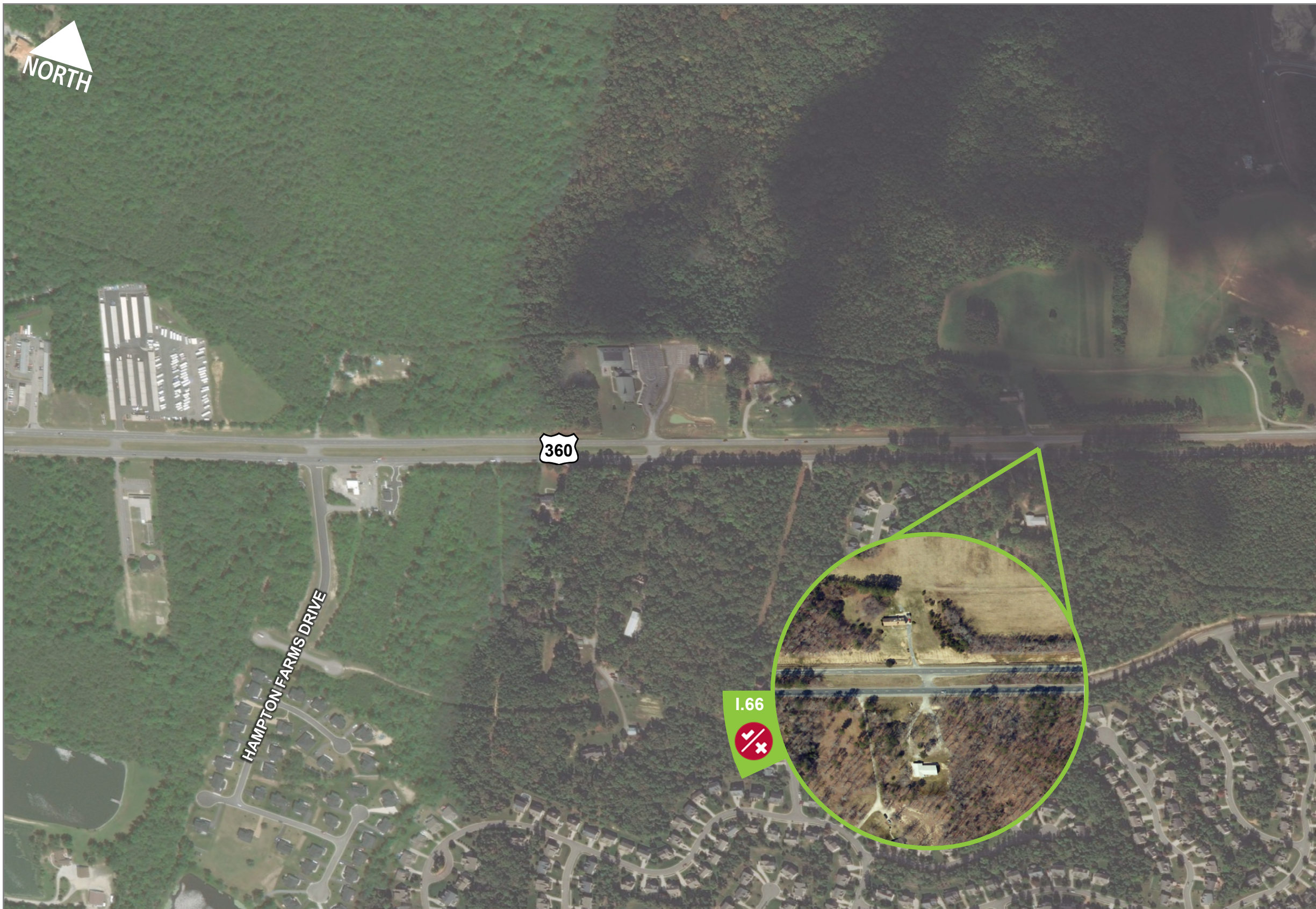


Intersections and Median Crossovers

I.66 US 360 at median opening east of Hampton Farms Drive (MM 121.2)

- Convert to directional median opening
- Extend all turn lanes to meet standard
- Improve signing and marking to meet systematic safety improvement standards



Legend | Chesterfield County Roadway, Intersection, and Median Crossover Recommendations

DRAFT

Recommendation	
I.#	Intersection Number
R.#	Roadway Segment Number

Existing Deficiency		
	Geometry	
	Access Management	
		Safety
		Traffic Operations



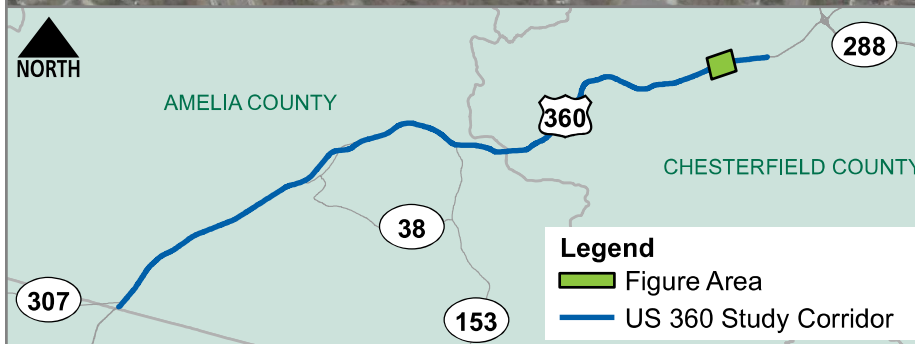
Intersections and Median Crossovers

I.67 US 360 at Otterdale Road

- Recommendation dependent on Otterdale Road preferred alternative

I.68 US 360 at Fox Club Parkway/Hampton Park Drive

- Recommendation dependent on Fox Club Parkway/Hampton Park Drive preferred alternative



Legend | Chesterfield County Roadway, Intersection, and Median Crossover Recommendations

DRAFT

Recommendation

- I.#** Intersection Number
- R.#** Roadway Segment Number

Existing Deficiency

- Geometry
- Access Management
- Safety
- Traffic Operations

US 360 Arterial Management Plan Corridor Recommendations Sheet 29

Intersections and Median Crossovers

I.69 US 360 at Cosby Road

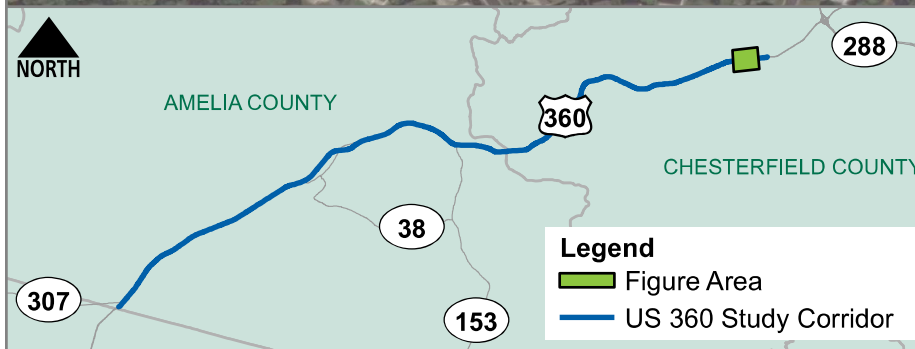
- Recommendation dependent on Fox Club Parkway preferred alternative

I.70 US 360 at Woodlake Village Parkway

- Recommendation dependent on Woodlake Village Parkway preferred alternative

I.71 US 360 at Ashlake Parkway

- Recommendation dependent on Ashlake Parkway preferred alternative



Legend | Chesterfield County Roadway, Intersection, and Median Crossover Recommendations

DRAFT

Recommendation

- I.#** Intersection Number
- R.#** Roadway Segment Number

Existing Deficiency

- Geometry
- Access Management
- Safety
- Traffic Operations

US 360 Arterial Management Plan Corridor Recommendations Sheet 30



Intersections and Median Crossovers

I.72. US 360 at Hancock Village Drive

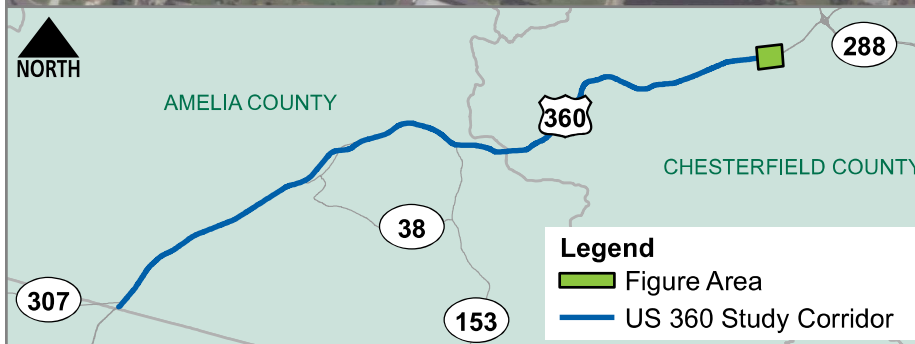
- Recommendation dependent on Hancock Village Drive preferred alternative

I.73. US 360 at Winterpock Road

- Recommendation dependent on Winterpock Road preferred alternative

I.74. US 360 at Southshore Drive

- Recommendation dependent on Winterpock Road preferred alternative



Legend | Chesterfield County Roadway, Intersection, and Median Crossover Recommendations

DRAFT

Recommendation

- I.#** Intersection Number
- R.#** Roadway Segment Number

Existing Deficiency

- Geometry
- Safety
- Access Management
- Traffic Operations

