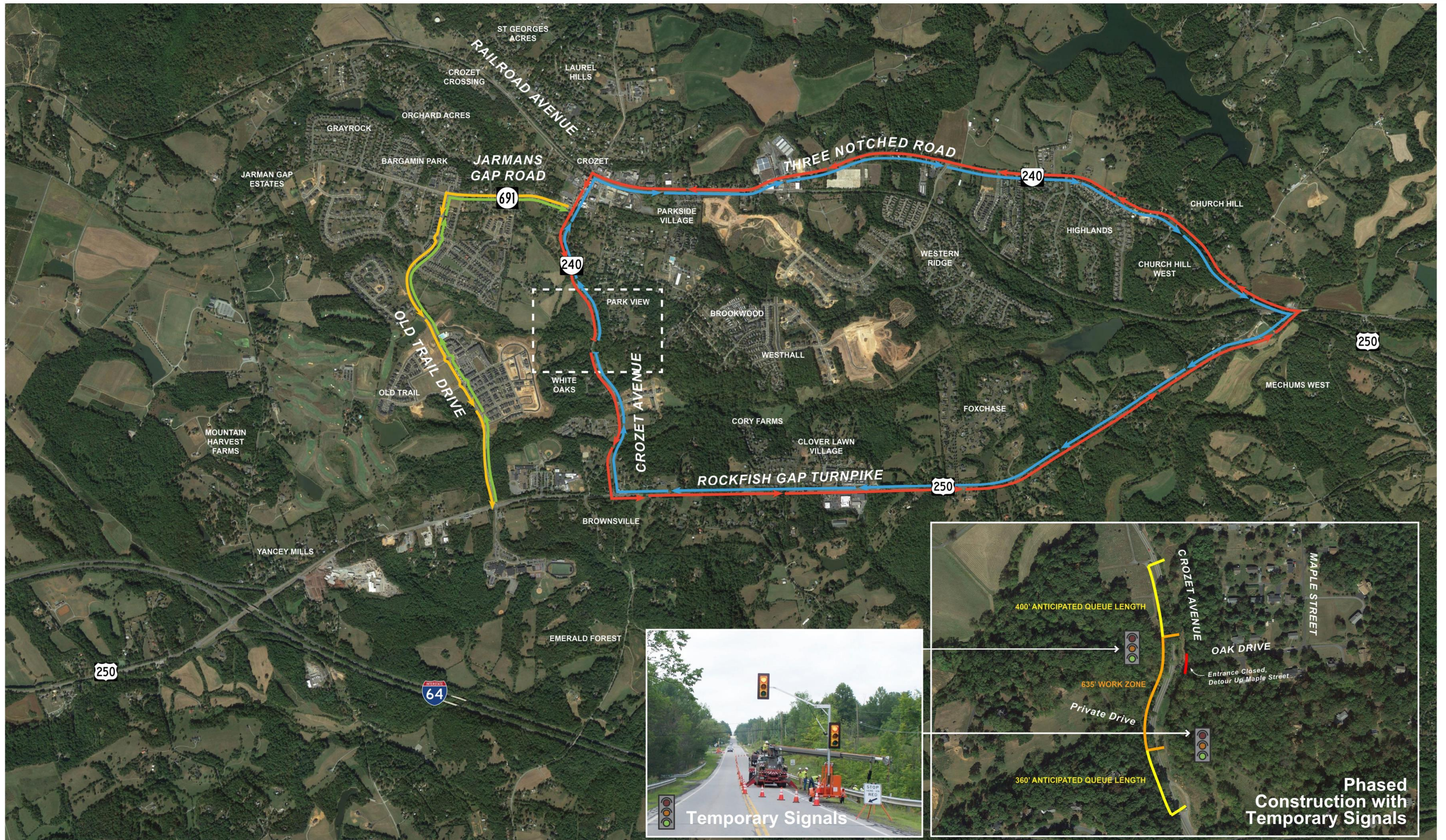


Proposed Temporary Detour Route 240 (Crozet Road) over Lickinghole Creek



Official Signed Detour: 7.27 mi
Unsigned Local Secondary Route: 1.91 mi

LEGEND:

- Official Signed Detour
- Official Signed Detour
- Unsigned Local Secondary Route
- Unsigned Local Secondary Route

