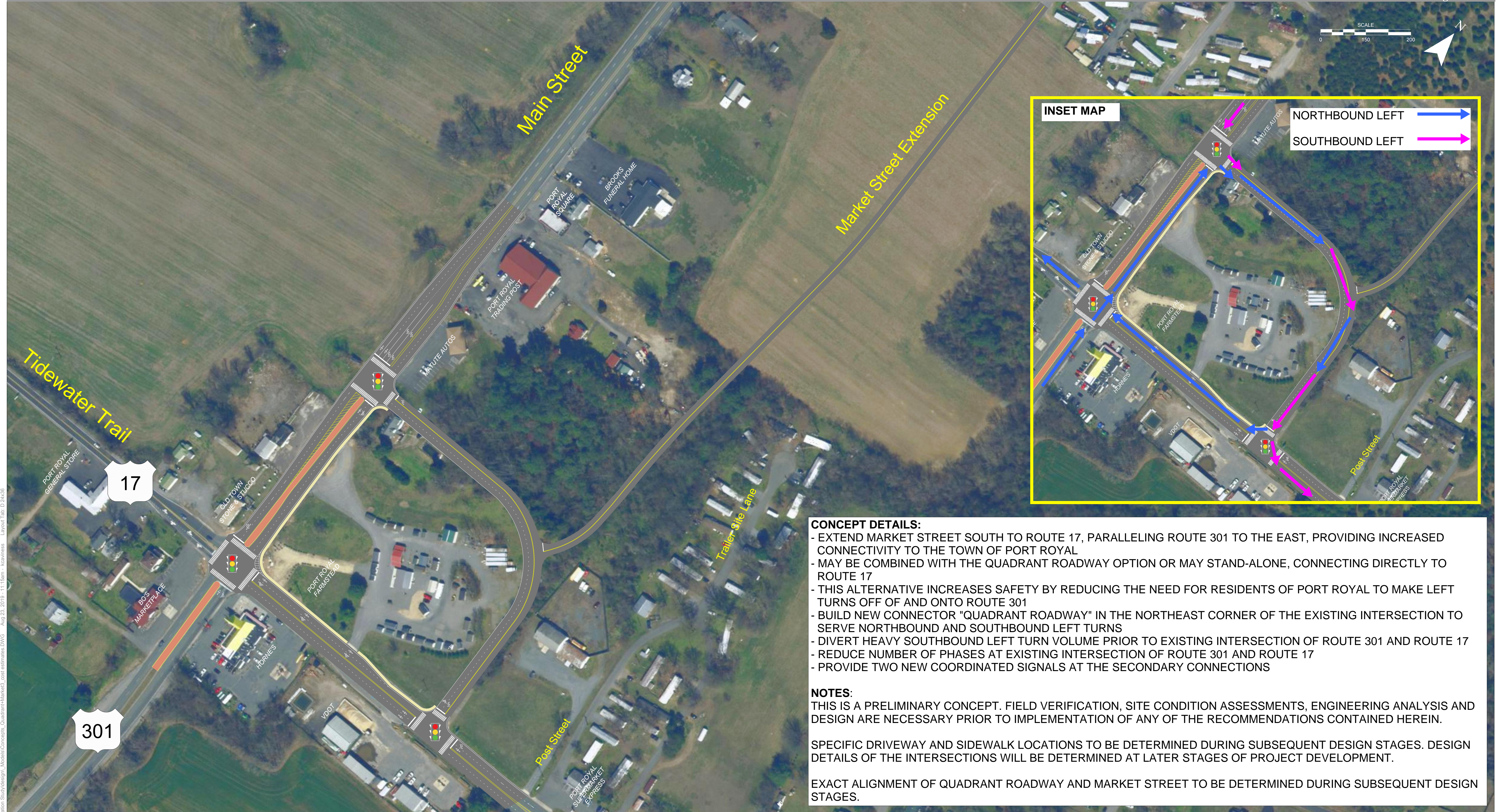


Quadrant Roadway + Market Street Extension Concept

Preliminary Design Subject to Change
Date: August 2019



- CONCEPT DETAILS:**
- EXTEND MARKET STREET SOUTH TO ROUTE 17, PARALLELING ROUTE 301 TO THE EAST, PROVIDING INCREASED CONNECTIVITY TO THE TOWN OF PORT ROYAL
 - MAY BE COMBINED WITH THE QUADRANT ROADWAY OPTION OR MAY STAND-ALONE, CONNECTING DIRECTLY TO ROUTE 17
 - THIS ALTERNATIVE INCREASES SAFETY BY REDUCING THE NEED FOR RESIDENTS OF PORT ROYAL TO MAKE LEFT TURNS OFF OF AND ONTO ROUTE 301
 - BUILD NEW CONNECTOR "QUADRANT ROADWAY" IN THE NORTHEAST CORNER OF THE EXISTING INTERSECTION TO SERVE NORTHBOUND AND SOUTHBOUND LEFT TURNS
 - DIVERT HEAVY SOUTHBOUND LEFT TURN VOLUME PRIOR TO EXISTING INTERSECTION OF ROUTE 301 AND ROUTE 17
 - REDUCE NUMBER OF PHASES AT EXISTING INTERSECTION OF ROUTE 301 AND ROUTE 17
 - PROVIDE TWO NEW COORDINATED SIGNALS AT THE SECONDARY CONNECTIONS

NOTES:
THIS IS A PRELIMINARY CONCEPT. FIELD VERIFICATION, SITE CONDITION ASSESSMENTS, ENGINEERING ANALYSIS AND DESIGN ARE NECESSARY PRIOR TO IMPLEMENTATION OF ANY OF THE RECOMMENDATIONS CONTAINED HEREIN.

SPECIFIC DRIVEWAY AND SIDEWALK LOCATIONS TO BE DETERMINED DURING SUBSEQUENT DESIGN STAGES. DESIGN DETAILS OF THE INTERSECTIONS WILL BE DETERMINED AT LATER STAGES OF PROJECT DEVELOPMENT.

EXACT ALIGNMENT OF QUADRANT ROADWAY AND MARKET STREET TO BE DETERMINED DURING SUBSEQUENT DESIGN STAGES.

H:\0323089 - Route 301 Arterial Preservation Study\design_Models\Concepts_QuadrantMarket_crest_estimates.dwg Aug 23, 2019 - 11:15am - kcanine Layout Tab: D 24x36