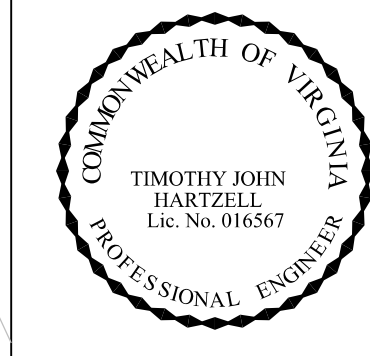


PROJECT MANAGER: *Dilip Patel, P.E., VDOT, NOVA Structures, 703-259-2429*
 SURVEYED BY: (12/19) *Brian P. Fletcher, L.S., VDOT, NOVA Surveys, 703-259-3224*
 DESIGN BY: *Fred Moomau, P.E., VDOT, NOVA L&D In-House Design, 703-259-3226*
 SUBSURFACE UTILITY BY: (01/20) *Gary Campbell, P.E., JMT, Inc., 757-499-1895*



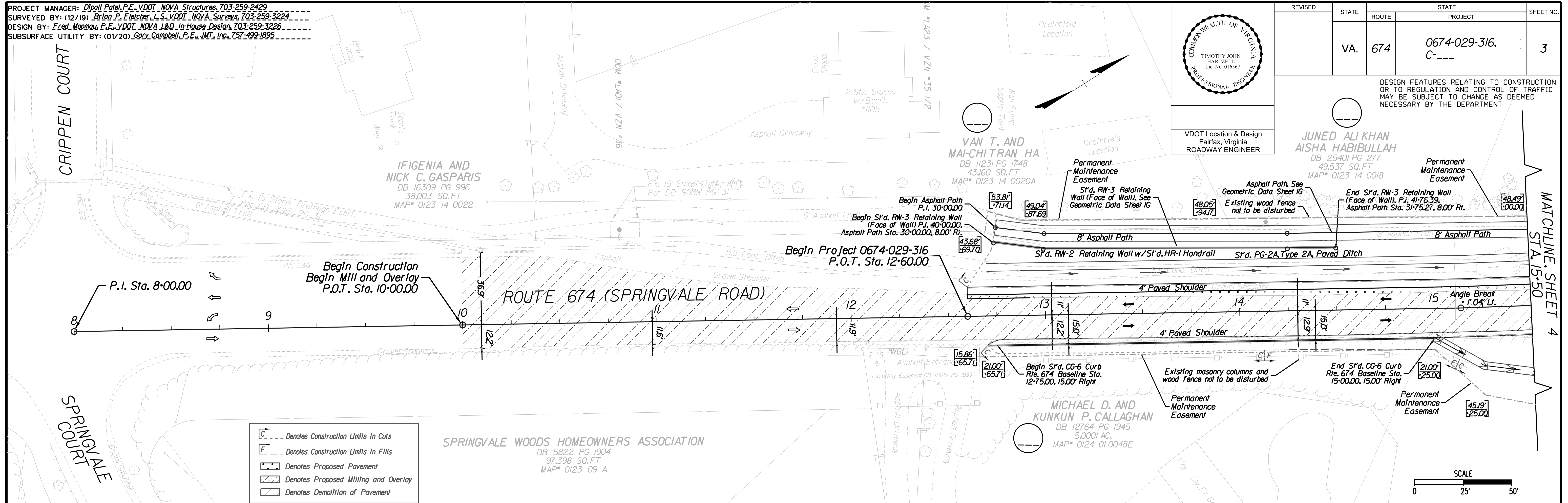
VDOT Location & Design
Fairfax, Virginia
ROADWAY ENGINEER

| REVISED | STATE | ROUTE | STATE | PROJECT | SHEET NO. |
|---------|-------|-------|-------|------------------------|-----------|
| | VA. | 674 | | 0674-029-316, C-___ | 3 |

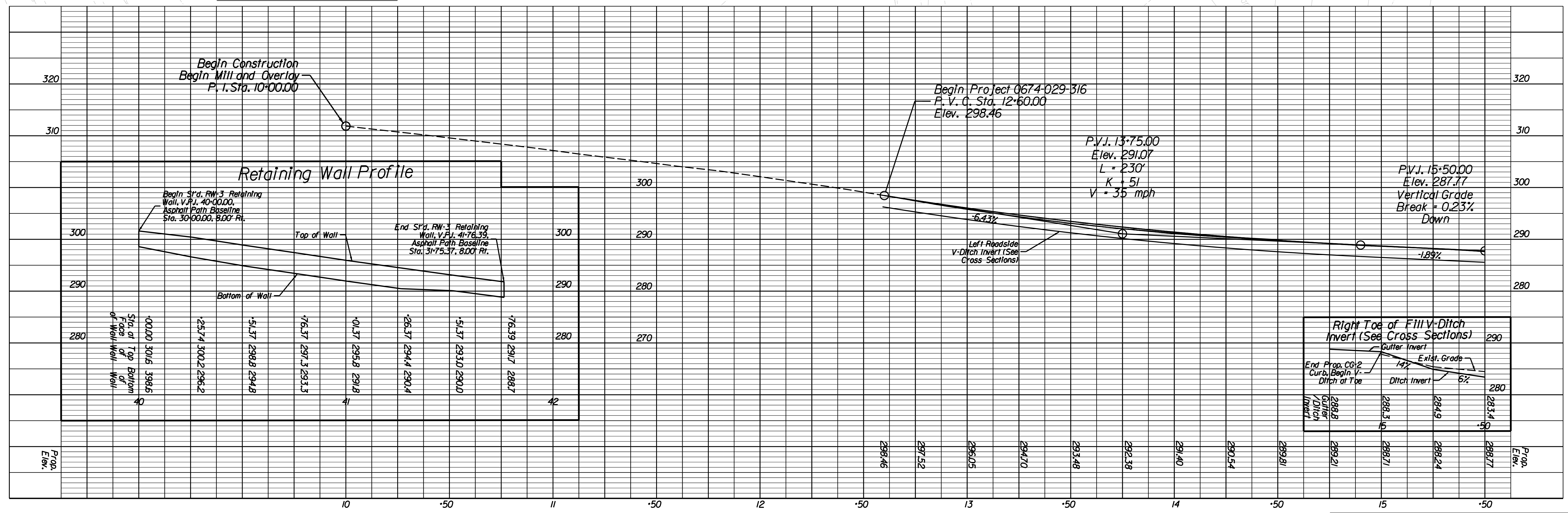
DESIGN FEATURES RELATING TO CONSTRUCTION OR TO REGULATION AND CONTROL OF TRAFFIC MAY BE SUBJECT TO CHANGE AS DEEMED NECESSARY BY THE DEPARTMENT

**JUNED ALI KHAN
AISHA HABIBULLAH**
 DB 25401 PG 277
 49,537 SQ.FT
 MAP# 0123 14 0018

Permanent Maintenance Easement



C Denotes Construction Limits in Cuts
F Denotes Construction Limits in Fills
P Denotes Proposed Pavement
M Denotes Proposed Milling and Overlay
D Denotes Demolition of Pavement



Right Toe of Fill V-Ditch Invert (See Cross Sections)

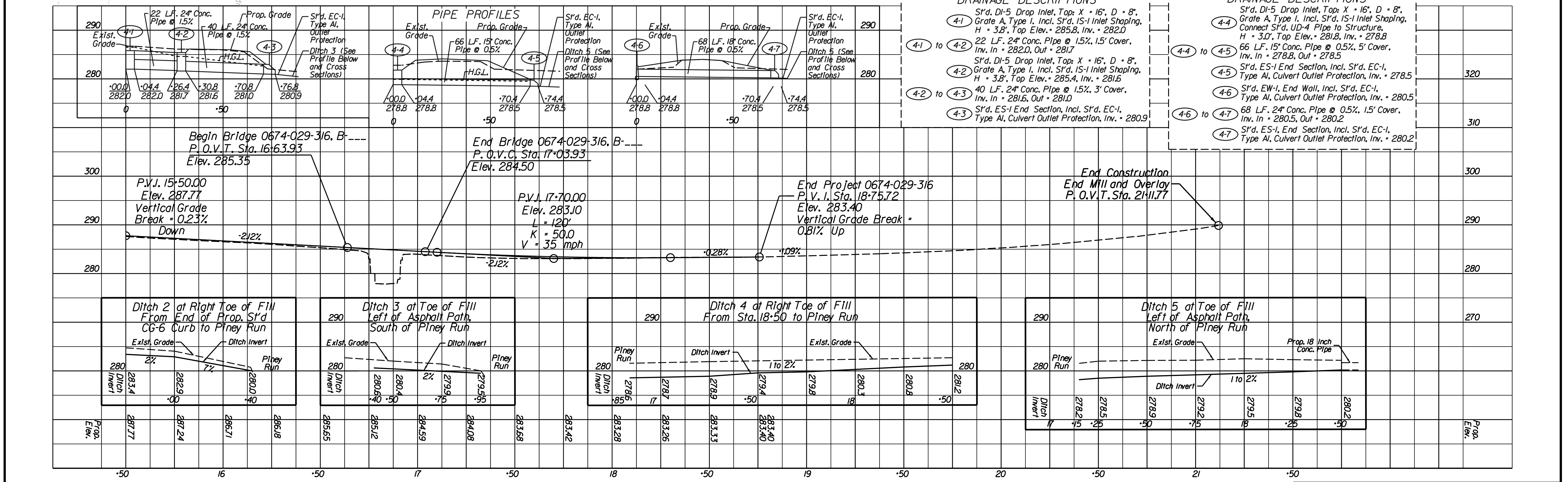
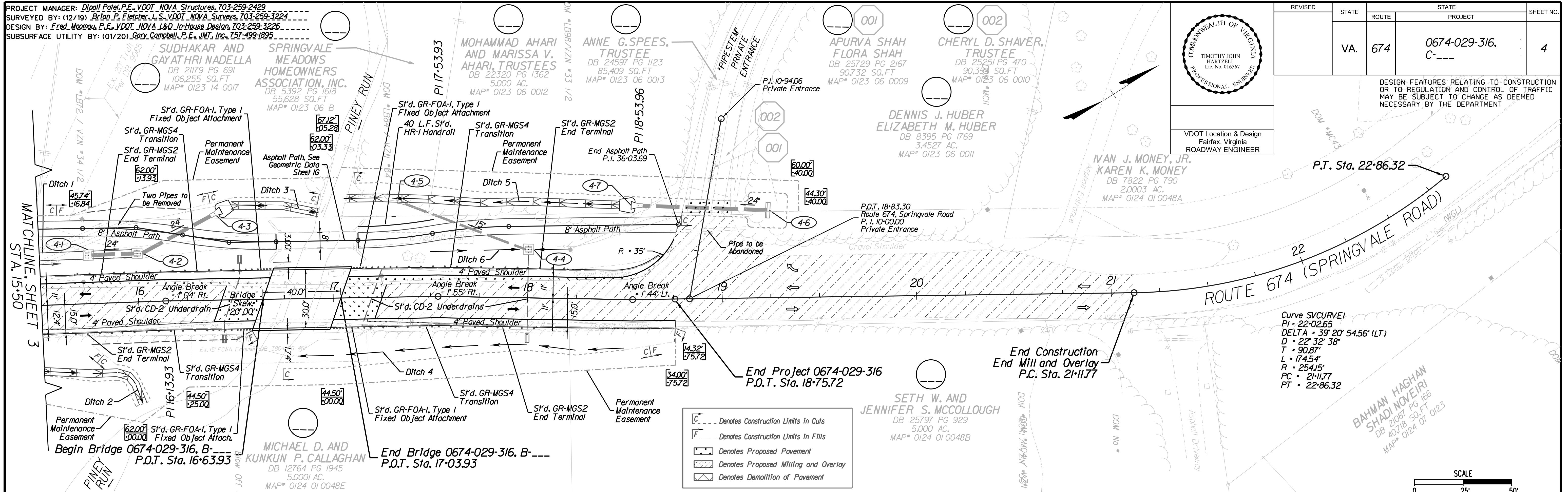
| Station | Gutter Invert Elev. | Ditch Invert Elev. |
|----------|---------------------|--------------------|
| 10+00.00 | 288.8 | 283.4 |
| 10+25.74 | 288.3 | 283.4 |
| 10+51.37 | 287.9 | 283.4 |
| 10+76.37 | 287.7 | 283.4 |
| 11+01.37 | 287.7 | 283.4 |
| 11+26.37 | 287.7 | 283.4 |
| 11+51.37 | 287.7 | 283.4 |
| 11+76.39 | 287.7 | 283.4 |

PROJECT MANAGER: Dipali Patel, P.E., VDOT NOVA Structures, 703-259-2429
SURVEYED BY: (12/19) Brian P. Fletcher, L.S., VDOT NOVA Surveys, 703-259-3224
DESIGN BY: Fred Moomau, P.E., VDOT NOVA L&D In-House Design, 703-259-3226
SUBSURFACE UTILITY BY: (01/20) Gary Campbell, P.E., JMT, Inc., 757-499-1895



| REVISED | STATE | ROUTE | PROJECT | SHEET NO. |
|---------|-------|-------|---------------------|-----------|
| | VA. | 674 | 0674-029-316, C-___ | 4 |

DESIGN FEATURES RELATING TO CONSTRUCTION OR TO REGULATION AND CONTROL OF TRAFFIC MAY BE SUBJECT TO CHANGE AS DEEMED NECESSARY BY THE DEPARTMENT



DRAINAGE DESCRIPTIONS

(4-1) S'd. DI-5 Drop Inlet, Top: X = 16', D = 8", Grate A, Type I, Incl. S'd. IS-1 Inlet Shaping, H = 3.8', Top Elev. = 285.8, Inv. = 282.0

(4-1) to (4-2) 22 LF, 24" Conc. Pipe @ 1.5%, 1.5' Cover, Inv. In = 282.0, Out = 281.7

(4-2) S'd. DI-5 Drop Inlet, Top: X = 16', D = 8", Grate A, Type I, Incl. S'd. IS-1 Inlet Shaping, H = 3.8', Top Elev. = 285.4, Inv. = 281.6

(4-2) to (4-3) 40 LF, 24" Conc. Pipe @ 1.5%, 3' Cover, Inv. In = 281.6, Out = 281.0

(4-3) S'd. ES-1 End Section, Incl. S'd. EC-1, Type AI, Culvert Outlet Protection, Inv. = 280.9

DRAINAGE DESCRIPTIONS

(4-4) S'd. DI-5 Drop Inlet, Top: X = 16', D = 8", Grate A, Type I, Incl. S'd. IS-1 Inlet Shaping, Connect S'd. UD-4 Pipe to Structure, H = 3.0', Top Elev. = 281.8, Inv. = 278.8

(4-4) to (4-5) 66 LF, 15" Conc. Pipe @ 0.5%, 5' Cover, Inv. In = 278.8, Out = 278.5

(4-5) S'd. ES-1 End Section, Incl. S'd. EC-1, Type AI, Culvert Outlet Protection, Inv. = 278.5

(4-6) S'd. EW-1, End Wall, Incl. S'd. EC-1, Type AI, Culvert Outlet Protection, Inv. = 280.5

(4-6) to (4-7) 68 LF, 24" Conc. Pipe @ 0.5%, 1.5' Cover, Inv. In = 280.5, Out = 280.2

(4-7) S'd. ES-1, End Section, Incl. S'd. EC-1, Type AI, Culvert Outlet Protection, Inv. = 280.2

