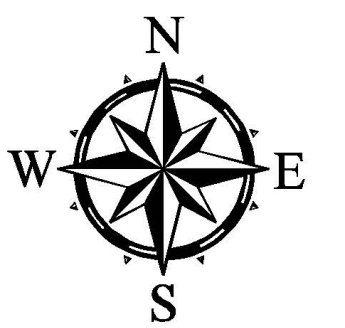
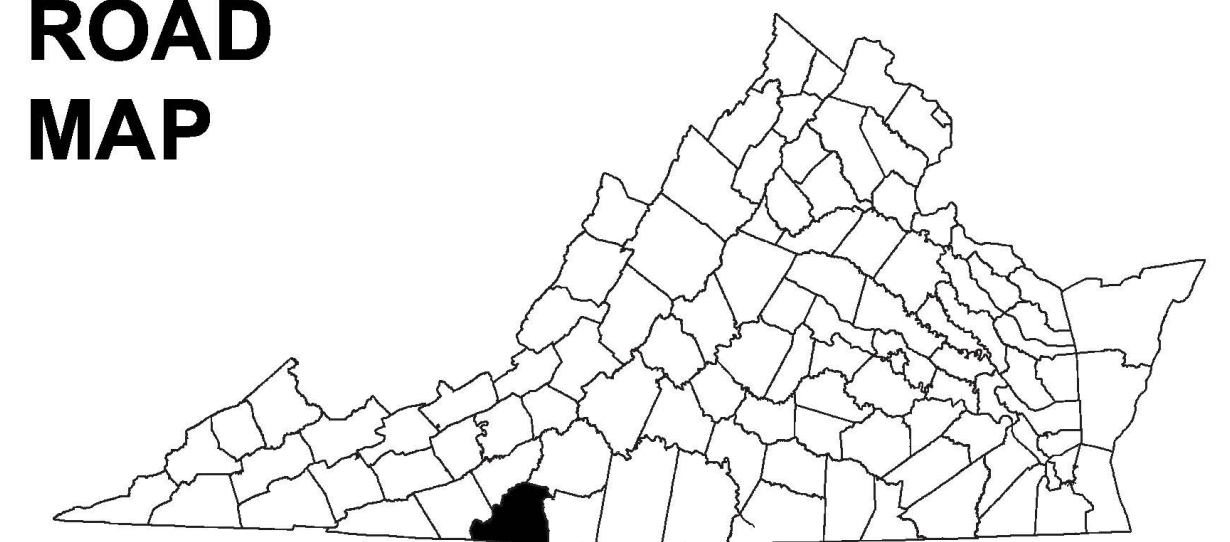


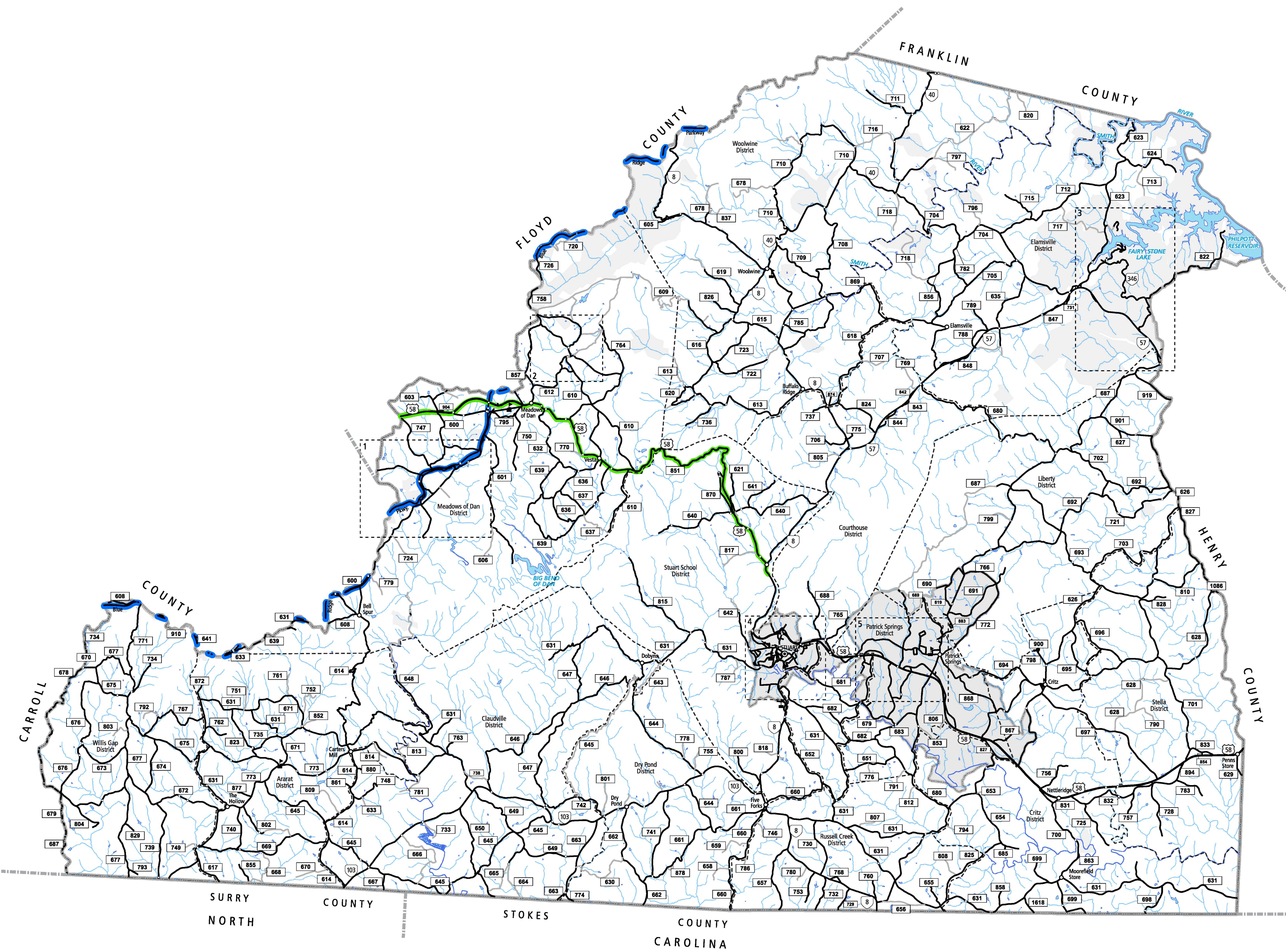
PATRICK COUNTY, VA



COUNTY ROAD MAP



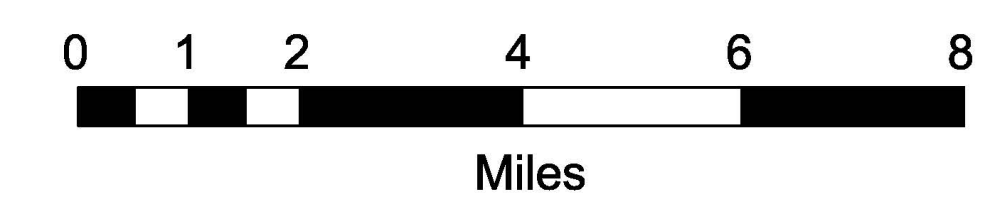
PATRICK COUNTY



ROAD CLASSIFICATIONS		MISCELLANEOUS	
	Frontage Road		Schools
	Secondary Route		Seaports
	State Route		Park_RideLots
	U.S. Route	AIRPORTS	
	Urban Road		Commercial
	LightSurface		General
	DividedHwyInterstate		Military
	AllWeatherSurface	RAILROADS	
	Unsurfaced		Metro
	otherSurface		VARailroads
	BikeRoutes		Park_N_Ride
	AppalachianTrail	BOUNDARIES	
	Scenic Roads		MilitaryAreas
			MagisterialDistricts
			Incorp_Areas
			Natural_LandCover

Additional ROAD CLASSIFICATION (Post 2019)

Hard-surface



The accuracy or completeness of this map is not guaranteed or warranted. Map depicts state-maintained highway network as of May 1, 2021. Copyright © 2021 by Commonwealth of Virginia Department of Transportation, All Rights Reserved

AN INVENTORY OF STATE MAINTAINED ROADS

TOTAL PRIMARY MILEAGE IN COUNTY 12/31/21: 100.54
SECONDARY MILEAGE TABULATION

TYPE	7/1/1932	7/1/1934	7/1/1941	TYPE	12/31/1950	12/31/1960	12/31/1970	12/31/1980	12/31/1990	12/31/2000	12/31/2017	12/31/2021
BIT SUR. PAVED	0.40	3.50	38.51	HARD SURFACE	76.45	137.80	239.33	350.98	461.46	478.72	542.20	544.47
GRAVEL, SOIL, ETC.	31.10	79.64	180.96	ALL WEATHER SURFACE	300.92	368.53	287.89	190.16	96.76	85.03	47.03	0.00
GRADED & DRAINED	80.20	55.10	199.10	LIGHT SURFACE	54.12	40.64	98.95	80.76	67.11	63.70	37.48	0.00
UNIMPROVED	488.50	441.30	151.05	UNSURFACED	163.86	72.31	1.18	0.73	0.73	0.73	0.00	82.34
TOTAL MILEAGE	560.20	579.54	569.62	TOTAL MILEAGE	595.35	619.28	627.35	622.83	626.06	628.18	626.71	626.81