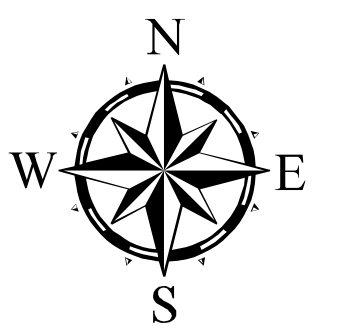
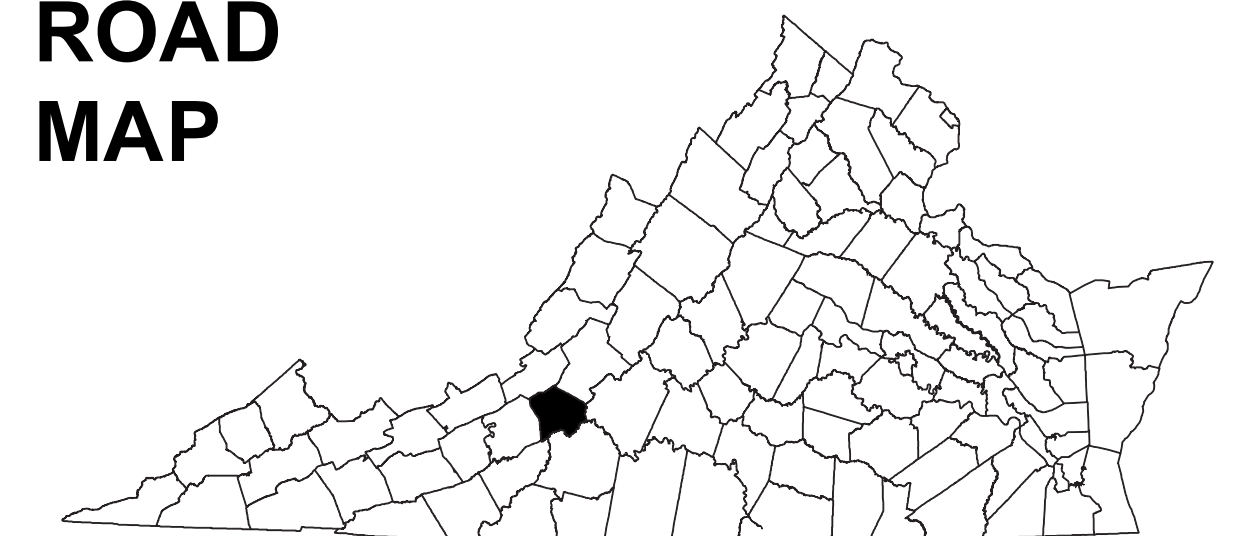


ROANOKE COUNTY, VA



COUNTY ROAD MAP



ROANOKE COUNTY

ROAD CLASSIFICATIONS

- Frontage Road
- Secondary Route
- State Route
- U.S. Route
- Urban Road
- LightSurface
- DividedHwyInterstate
- AllWeatherSurface
- Unsurfaced
- otherSurface
- BikeRoutes
- AppalachianTrail
- Scenic Roads

MISCELLANEOUS

- Schools
- Seaports
- Park_RideLots
- AIRPORTS**
- Commercial
- General
- Military

RAILROADS

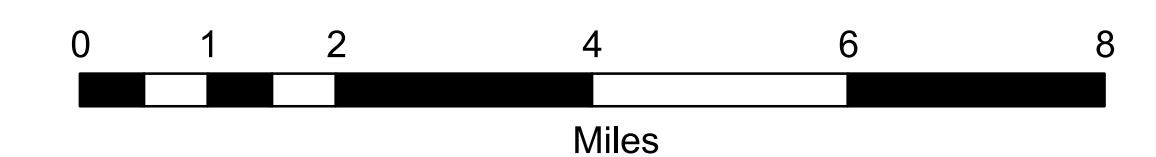
- Metro
- VARailroads
- Park_N_Ride

BOUNDARIES

- MilitaryAreas
- MagisterialDistricts
- Incorp_Areas
- Natural_LandCover

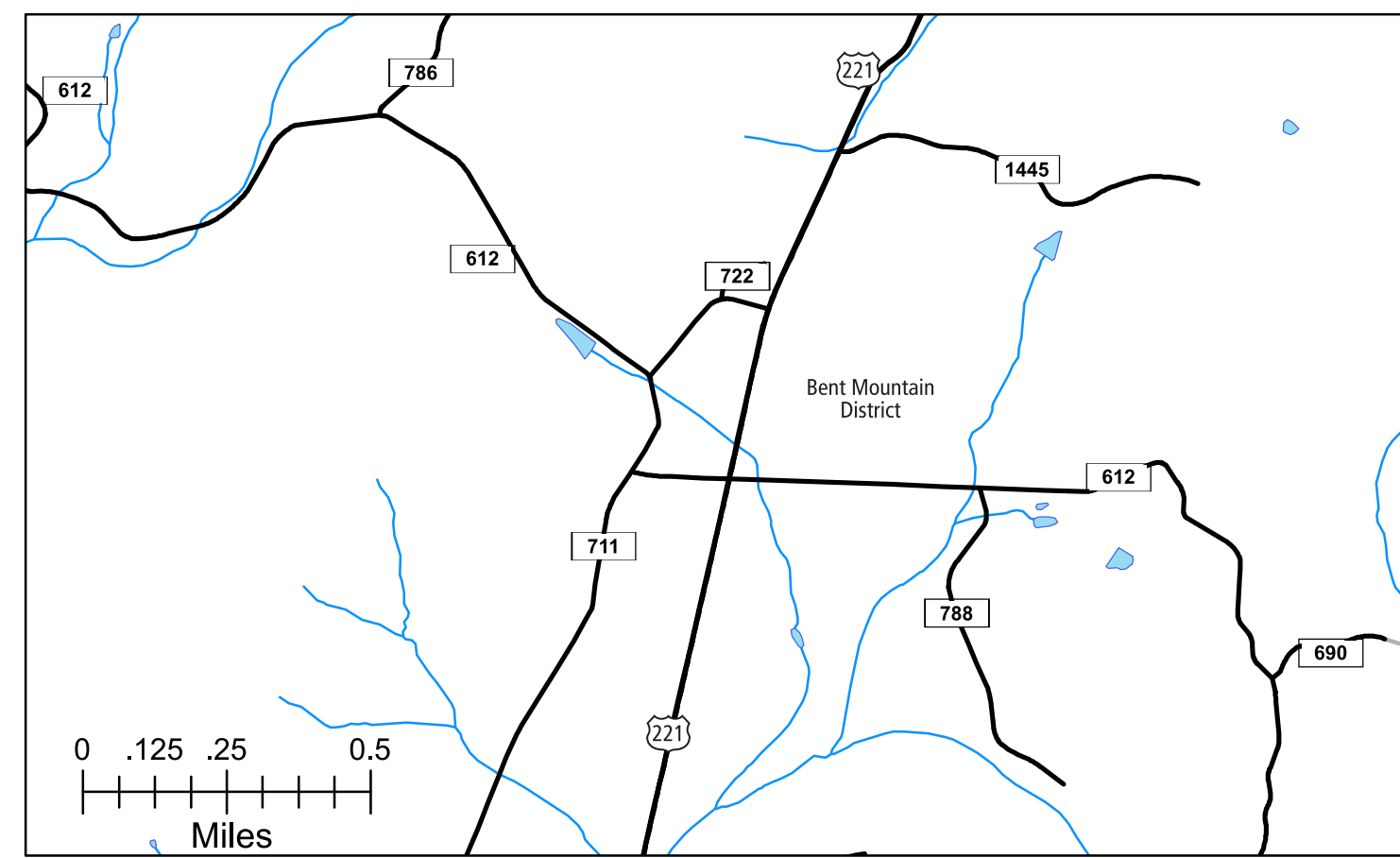
Additional ROAD CLASSIFICATION (Post 2019)

Hard-surface

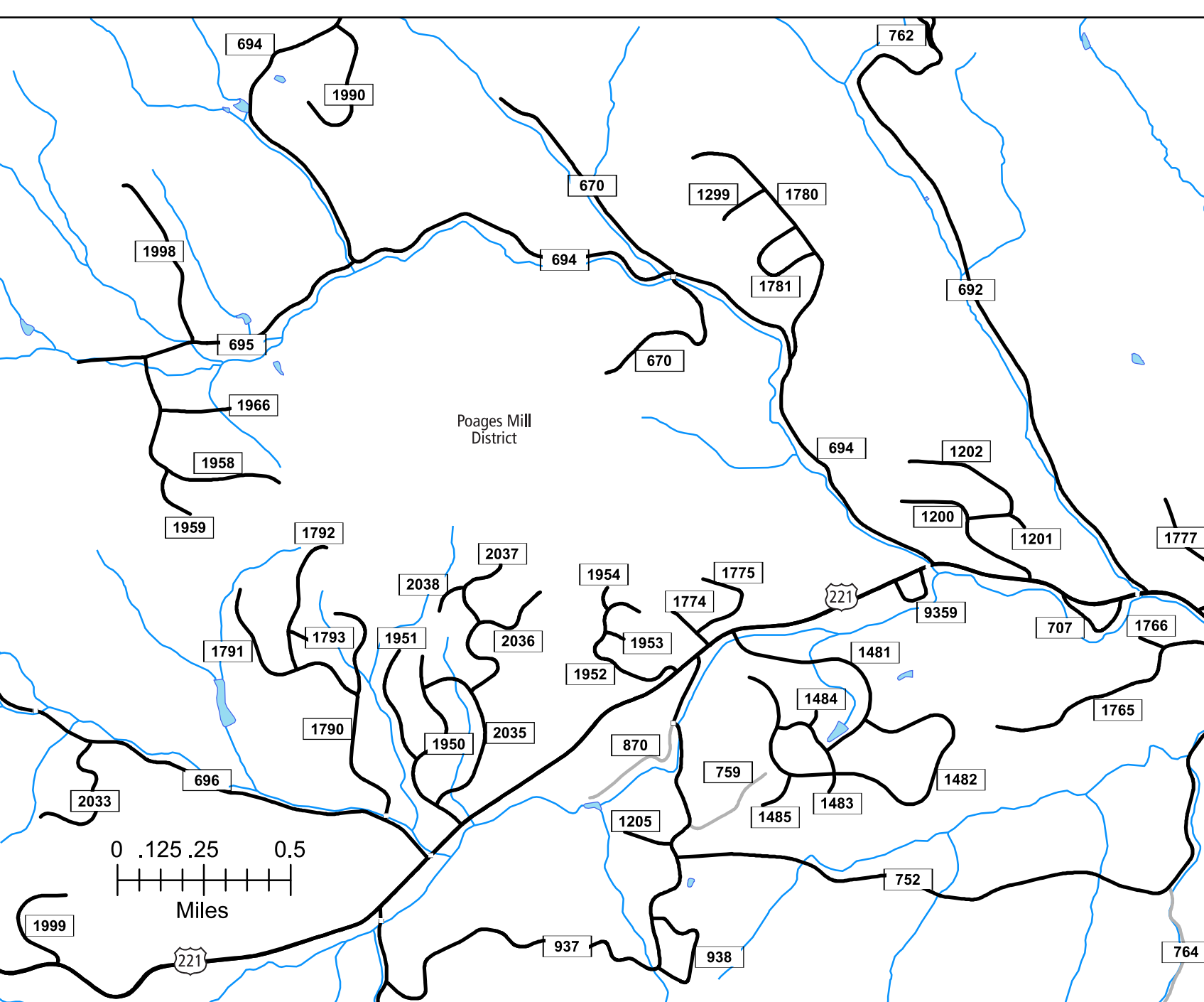


The accuracy or completeness of this map is not guaranteed or warranted. Map depicts state-maintained highway network as of November 1, 2022. Copyright © 2022 by Commonwealth of Virginia Department of Transportation. All Rights Reserved

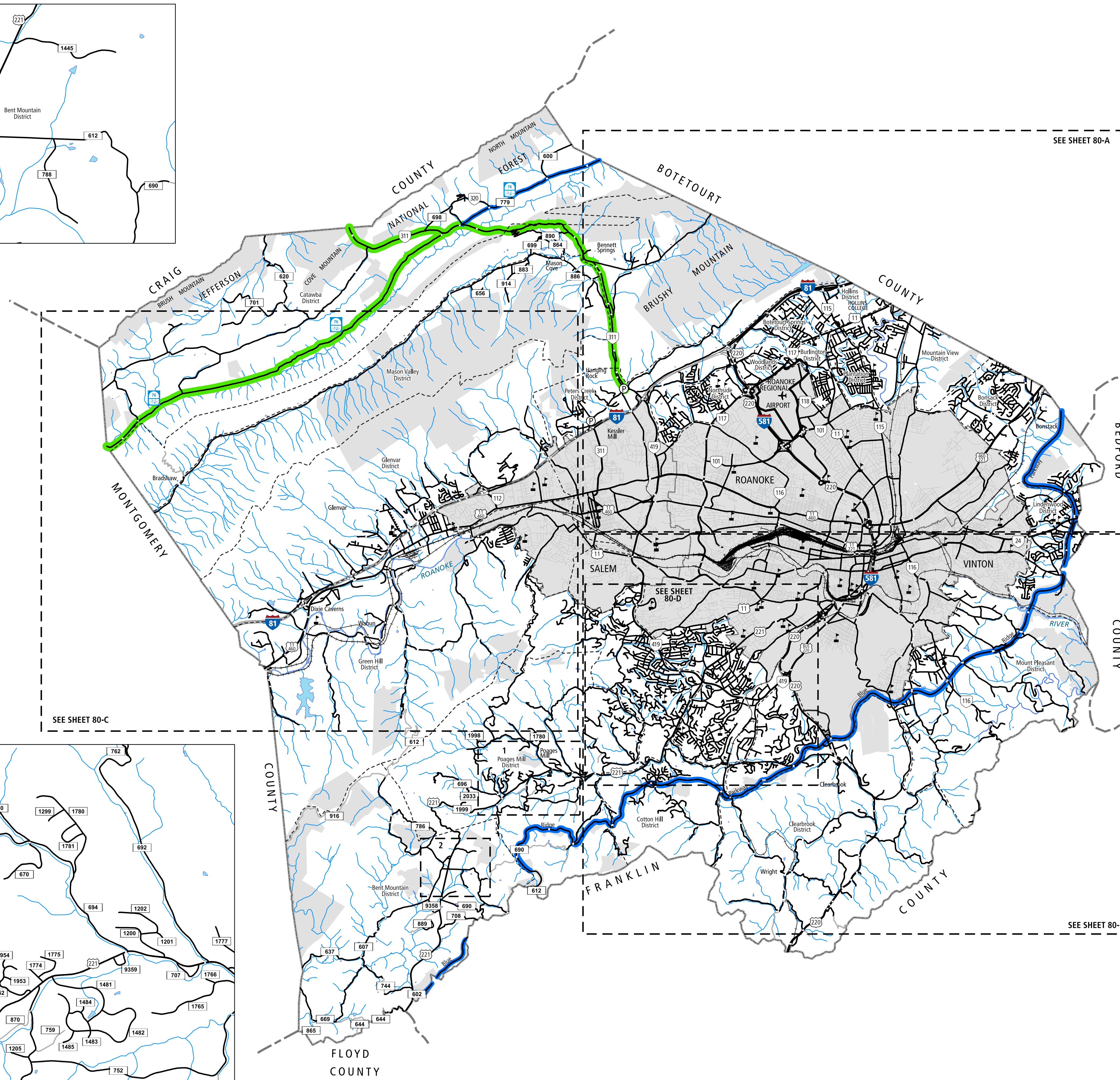
AN INVENTORY OF STATE MAINTAINED ROADS



2 AIRPORT AREA



1 POAGES MILL AREA



TOTAL PRIMARY MILEAGE IN COUNTY 12/31/2011-62.92

SECONDARY MILEAGE TABULATION

TYPE	7/1/1992	7/1/1994	7/1/1997	7/1/1999	TYPE	12/31/1990	12/31/1995	12/31/1997	12/31/1999	12/31/1999	12/31/2000	12/31/2019	12/31/2021
BT SUR PAVED	74.97	81.79	197.90		HARD SURFACE	208.44	365.96	444.69	438.07	491.61	532.92	570.31	574.29
GRAVEL SOIL ETC	217.24	183.93	149.26		ALL WEATHER SURFACE	46.24	49.63	47.16	33.92	26.52	23.74	21.23	00.00
GRADES & DRAINED	9.98	19.61	3.27		LIGHT SURFACE	84.33	13.90	2.51	0.16	0.16	0.16	.24	00.00
UNIMPROVED	27.83	26.04	8.17		UNSURFACED	10.17	1.21	0.98	0.10	0.00	0.00	.18	20.15
TOTAL MILEAGE	330.22	317.36	358.60		TOTAL MILEAGE	349.18	430.70	495.36	471.35	518.29	554.82	591.88	594.44